



# **the besen centre**

---

## **Technical Specifications**

**Version: 4.0 | Date: 4<sup>th</sup> May 2022**

**Technical Manager: Matt Silk**

Phone: (03) 9834 0202

Email: [matt@besencentre.com.au](mailto:matt@besencentre.com.au)

# Theatre Contacts

## **The Besen Centre**

Address: 87-89 Station Street  
Burwood Vic 3125  
Phone number: (03) 9834 0200  
Email: info@besencentre.com.au  
Website: www.besencentre.com.au

## **Technical Office:**

Phone number: (03) 9834 0222 (only on rehearsal and performance days)

## **Theatre Manager:**

### **Andrew Smith**

Phone number: (03) 9834 0200  
Mobile Number: 0417 054 225  
Email address: manager@besencentre.com.au

## **Production Manager:**

### **Jason Lord**

Phone number: (03) 9834 0201  
Mobile Number: 0412 959 343  
Email address: jason@besencentre.com.au

## **Technical Manager:**

### **Matt Silk**

Phone number: (03) 9834 0202  
Mobile Number: 0438 086 842  
Email address: matt@besencentre.com.au

# Theatre Access

Stage Door is located down the path on the left side of the building. The loading dock is located at the rear of the theatre. There is no internal access from the foyer to the back of house areas.

Access to the loading dock is via the access road on the far side of the car park. There is limited parking at the rear of the theatre near the loading dock. Trucks and Vehicles can remain in the loading dock unless advised otherwise by theatre staff.

All vehicles must be parked in marked parking spots as access is required at all times to school ovals and maintenance areas. The venue staff will be able to provide more information on suitable parking locations.

## Stage

Stage is unraked with a proscenium and a full fly tower with flying facilities. Stage floor is constructed with flat black 6mm Masonite sheets over 20mm engineered particle board and is sprung on a joist construction. Screwing into the stage is permitted with short screws however larger holes including coach bolts will need the permission of the Technical Manager.

Stage distributed load SWL limit: 650kg/m<sup>2</sup>  
Stage point load SWL limit: 350 kg

## Stage Dimensions

### Proscenium

Width: 12.30m  
Height: 6.995m

### Setting Line Measurements

Setting line is considered to be the front edge of the proscenium arch

SL to DS edge of apron	2.805m
SL to first fly line	1.220m
SL to last fly line	8.270m
SL to rear wall	9.035m
CL to OP fly rail	12.1m
CL to PS dock door	15.6m
Stage floor to underside of grid	17m
Stage depth including apron	11.840m

## Orchestra Pit

Orchestra pit can be run in multiple configurations depending on production needs. Orchestra pit lids are removed via a chain motor on dolly and must only be done by the technicians on duty. Pit configuration must be discussed with the Technical Manager before hiring and some configurations will attract an additional charge. The use of this chain motor and dolly track is for the moving of orchestra pit lids only.

Pit lids are of steel construction with sprung 20mm particle board covered with matte black 6mm Masonite.

## Movable Back Wall

The rear wall of the stage can be raised effectively doubling the depth of the usable stage. This also allows for operating the stage in reverse, with the audience seated in the rehearsal room.

The wall is counterweighted and moved via 1 x 500kg electric chain motor and can only be operated by Besen Centre staff and only with prior arrangement. Additional charges may apply for use of the back wall. Please contact the Technical Manager for more information.

## Flying Facilities

ITE installed single purchase hand line system with brake.

Operating position	OP at stage level
Total number of installed lines	49
Panorama lines	Line 48 and Line 49
Batten drift	17.01m
Batten type	50X75mm rectangular steel battens
Batten length	16m
Batten pickups	5 pickups; 1 at centre then at 3.6m intervals
Batten point load	50kg
Batten S.W.L	400kg
Line MAX load	500kg
Cradle capacity	400kg
LX bars swing	Yes maximum 1000mm
TAB lines swing	Yes
Fly bars swing	Yes
Cradles interlocked	Yes with permission
Certificate	Inspected yearly.
Operation	Only with permission of technical staff

House Curtain on Line 1 is a variable speed motorised line, run via a key locked control panel downstage OP.

## Loading Dock

### Access

Truck access is available up to 8 tonne via the rear of the building.

Loading dock floor is at height of	1.077m
Loading dock door height	3.721m
Loading dock door width	3.133m

### Loading dock to stage opening

Opening height	3.865m
Opening width	3.142m

Note: Scenery storage may be available between hiring dates with prior approval.

# Hanging Plot 2022

Line Type: **SP** = Single purchase, **DP** = Double purchase, **MW** = Motor Winch, **HW** = Hand Winch, **HL** = Handline

W.L.L.: Maximum distributed load including bar weight      Setting Line: Front edge of the Proscenium Wall

**Important Note:** Any changes to the standard hanging plot must be submitted to the technical manager at least one month prior to your event for approval.

Line	From SL	Type	W.L.L	Neutra l Weight	Venue Allocation	Intended Use
0.5	1200	HW	100kg		BORDER	
1	1220	MW	500kg		HOUSE CURTAIN	Motorised
2	1520	SP	400kg			
3	1670	SP	400kg	54kg	LEG 1	
4	1820	SP	400kg	60kg	LX 1	
5	No line				No Line	No Line
6	2120	SP	400kg			
7	2270	SP	400kg			
8	2420	SP	400kg			
9	2570	SP	400kg			
10	2720	SP	400kg			
11	2870	SP	400kg			
12	3020	SP	400kg	54kg	LEG 2	
13	2170	SP	400kg			
14	3320	SP	400kg			
15	2470	SP	400kg			
16	3620	SP	400kg			
17	2770	SP	400kg			
18	3920	SP	400kg			
19	4070	SP	400kg		BORDER	
20	4220	SP	400kg	54kg	LEG 3	
21	4370	SP	400kg	60kg	LX 2	
22	No Line				No Line	No Line
23	4670	SP	400kg			
24	4820	SP	400kg	42kg	MID TABS	
25	4970	SP	400kg			
26	5120	SP	400kg			
27	5270	SP	400kg			
28	5420	SP	400kg			
29	5570	SP	400kg	54kg	LEG 4	
30	5720	SP	400kg			
31	5870	SP	400kg			
32	6020	SP	400kg			
33	6170	SP	400kg			
34	6320	SP	400kg			
35	6470	SP	400kg			
36	6620	SP	400kg			
37	6770	SP	400kg			
38	6920	SP	400kg		BORDER	
39	No Line				No Line	No Line
40	7220	SP	400kg	60kg	LX 3	
41	No Line				No Line	No Line
42	7520	SP	400kg	60kg	LX 4	
43	7670	SP	400kg	54kg	Legs 5	
44	7820	SP	400kg			
45	7970	SP	400kg	42kg	Black Tabs	
46	8120	SP	400kg			
47	8270	SP	400kg			
48		SP	400kg		Panorama	
49		SP	400kg		Panorama	
50		MW	400kg		Counterweight Lift	

## Weight distribution

Upper Gallery: 36 x 12kg weights and 12 x 6kg weights.  
Mid Gallery: 36 x 12kg weights and 12 x 6kg weights.  
Remainder of weights are to be left at floor level or in motorised counterweight cradle.

Note: All counterweights must be returned to the above configuration after all productions and will be checked by the technician on duty before release. Any additional time required to return to standard will be charged back to the client.

## Draperies

Type	Material	Colour	Width	Height	
House Curtain	Wool	Orange with Besen Centre Logo	14M	8m	1
Border	Wool	Black	14M	1.5m	5
Legs	Wool	Black	2-3M	8m	10
Tabs / Smother	Wool	Black	14M	8m	4
Cyclorama	Sharks Tooth	White	17M	8m	1
Scrim	Sharks Tooth	Black	14M	8m	1
Scrim	Sharks Tooth	White	14m	8m	1

Note: All draperies visiting the Besen Centre requires a fire rating, please contact the technical manager if more information or assistance is required.

## Access Equipment

Elevated work platform: 1 x JLG 36AM Battery powered single person lifter

Note: EWP restrictions are in force and all operators will need to provide proof of qualification to the technical manager and technician on duty before operation is allowed.

Ladders: 1 x aluminium extension ladder, extendable to a working height of 5m; harness will need to be worn above 2m.

### Notes

All rigging must be discussed with the Technical Manager prior to the event and cleared with the technician on duty on the day. Any rigging to the grid floor or galleries must have the express written permission of the Technical Manager and be installed by a qualified rigger.

All flown items must be rigged with rated equipment to be inspected and approved by the technician on duty.

All rigged items from an external company will require a JSA/Public Liability Insurance to be supplied to the technical manager prior to the event.

# Lighting

## Positions

Stage LX bars may be swung up to 1000 mm from their standard positions.

*See hanging plot for standard LX bar locations*

## FOH Bridge

Setting Line to lighting bar      11.64m @ 55-degree angle  
Usable bar width                      10m

## FOH Balcony

Setting Line to FOH Perch          15.95m @ 5-degree angle

## Perch (PS & OP)

Setting Line to FOH Perch          9.7m @ various on height degree angle

Note: Perches provide difficult shots, as the location is very wide due to auditorium width. Useful only for downstage washes as per standard rig.

## Lighting Desk

High End Systems Full Boar 4 with playback wing

## Signal distribution

Art-Net routes DMX throughout the theatre. LSC Nexus dmx/ethernet converters are located on the FOH Bridge, Stage Dimmer Cage and Grid Patch Rack and allow for the distribution of multiple universe throughout the theatre.

Please contact the Technical Manager for port and universe allocations.

## Cat 6

4 x Cat6 lines run from control room to top of the grid with break in at VIP lounge patch panel and orchestra pit patch rack. Can support both Art-Net and vision over cat6.

## Fibre

No client accessible fibre lines are currently installed in the building

## Dimmer/Relay Racks

The Besen Centre features 2.4kW and 5kW LSC Wallpak dimmers split between the onstage patch bay and the FOH Bridge. Onstage patch bay also features 2 x LSC Redback switch/relays

Total 2.4kw dimmer channels	84
Total 5kw dimmer channels	12
Total dimmer channels	96
Total switch relays	24

## Lighting Notes

All changes to the standard rig will require permission from the Technical Manager.

All changes to the standard rig will require a plan and weight calculations to be completed and submitted to the Technical Manager.

All lighting equipment listed below is part of the standard rig.

Any changes to the lighting rig must be returned back to standard within the hiring period. Any additional time required to return back to standard will be charged back to the client.

## Stage Luminaires

### Profiles

Make	Model	Angle	Details/Accessories	Watt	Total
ETC	Source 4 Fixed	19	Shutters	750	36
ETC	Source 4 Fixed	26	Iris/Shutters	750	14
ETC	Source 4 Fixed	36	Gobo Holders/Shutters	750	24
ETC	Source 4 Zoom	15-30	Shutters	750	12

### Fresnels

Make	Model	Details/Accessories	Watt	Total
ETC	Source 4 Fresnel	Barn doors	750	14

### LED Fixtures

Make	Model	Detail / Accessories	Total
Crown	RGBW	Single cell CYC LED units	12
Fineart	RGBA	Par can LED wash	22
Robe	Parfect 100	40 degree lenses, Barndoors	24
Generic	UV LED		2

### Followspots

Make	Model	Detail / Accessories	Watt	Total
Fineart	330w discharge	Bullseye Target Variable CTO Iris	330	2

### Other fixtures

Make	Model	Angle	Detail / Accessories	Watt	Total
Kupo	Molfay		2 Way Blinder	2 x 650	2

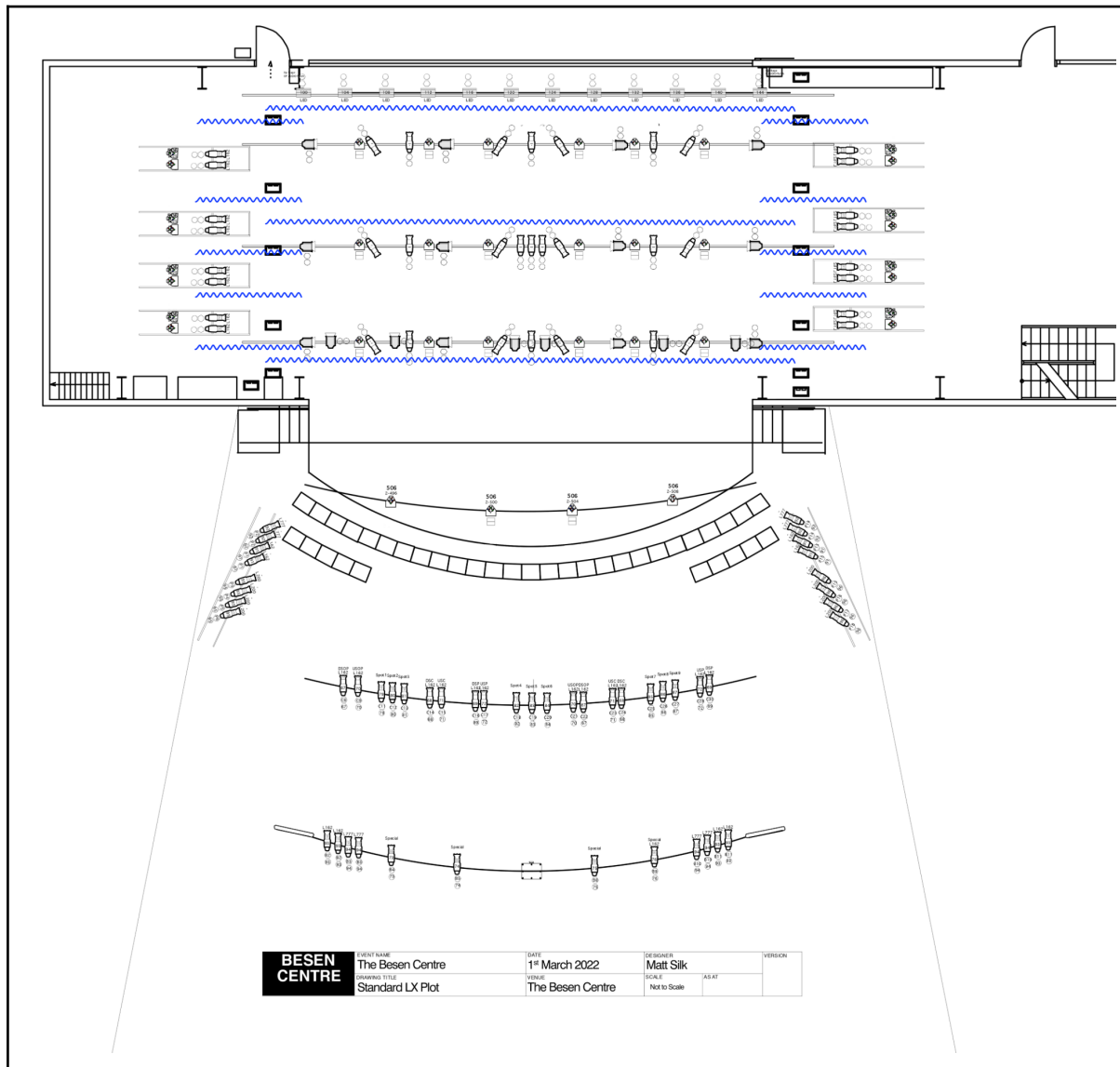
## Moving Lights

Moving Lights are not part of the standard house rig. During certain hire periods and on request they will be provided by our preferred supplier and will be added to the Hirers' final invoice. Price will be supplied on request or application.

The theatre will add a minimum of 15% on top of all hired equipment hired in for your event.



# Lighting Plot and Patch Sheets



## Lighting Documents

Please contact the technical manager for current standard rig plot and patch sheets.

## House Lights

House lights are controlled from various panels located throughout the venue: Stage managers console; Control Room; Manager's office.

## Power

- 2 x 3 phase 40-amp outlets - PS Dimmer/Patch Bay
- 1 x 3 phase 40-amp outlet - PS Stage Manager's Console
- 1 x 3 phase 40-amp outlets - OP Proscenium wall
- 1 x 3 phase 160-amp feed US PS wall\*
- 1 x 3 phase 40 amp outlet - Loading Dock
- 1 x 3 phase 40-amp outlet - Rehearsal Room Patch Bay

\*connecting into the 160-amp feed requires a qualified electrical. Charges apply for connecting into this feed. Contact the Technical Manager if you require the use of this feed.

## **Audio**

**FOH audio console:** M7CL 48  
**FOH audio processing:** Yamaha DME

Standard mix position is from the control room. Rear stalls mix position can be set up at additional cost and only by prior arrangement with the technical manager.

Total seat allocation required for rear stalls mix position is 12; T19 through T24 and S19 through S24.

The Besen Centre audio system is run via two separate multicore systems.

**Patch system 1:** 24 channels with 4 returns from control room to prompt corner only.

**Patch system 2:** 36 channels in total distributed throughout the stage via 6 x 12ch stage boxes and orchestra pit patch rack.

Each stage box consists of 12 channels, the last 4 being dual sex XLRs to allow use as returns.

Stage box locations: grid; rear orchestra pit wall P; rear orchestra pit OP; OP downstage; OP upstage; and PS upstage

All stage boxes are terminated in the orchestra pit patch rack, which also includes the 36 channels from control room allowing patching to any location.

VIP lounge patch panel features TRS field allowing for insertion across all 36 channels and also routing to rear stalls mix position.

This allows 36 lines down from the control room, for items such as radio mics, in addition to 36 lines from the orchestra pit if required.

### **Speakers**

2 x Meyer UPA-1P	Left and Right Stalls located either side proscenium
2 x Meyer UPA-1P	Centre Stalls and Centre Balcony located above proscenium
2 x Meyer UPJ	Left and Right Balcony located FOH bridge on wire rope winch
4 x Meyer HM1	Rear Stalls Fill located under balcony
2 x Meyer HSM	Subwoofer located under stairs to stage OP and PS

### **Foldback**

4 x QSC K8 stage fill mounted to panorama ladders 1 and 3  
2 x JBL eon 12" boxes  
4 x Otto 12" boxes

### **Playback:**

The Besen Centre has multiple playback options available from both control room and a portable stage rack.

#### **Control Room:**

1 Tascam Multi-format CD Player  
1 Mac mini running Qlab  
2 Radial ProAV2 DI with 3.5mm and Lightning inputs

#### **Portable Stage Rack:**

1 Tascam Multi-format CD player  
1 Mac mini running Qlab  
2 Radial ProAV2 DI with 3.5mm and Lightning inputs

## Microphones

<b>Make</b>	<b>Model</b>	<b>Detail / Accessories</b>	<b>Use</b>	<b>Total</b>
Shure	Sm58	Microphone clips	Vocals and Instruments	<b>6</b>
AKG	C568EB	Microphone clips	Omni area	<b>4</b>
Sennheiser Receiver	EW500-G3			<b>2</b>
Sennheiser Handheld	E945	Microphone Clip	Vocals and Instruments	<b>2</b>
Sennheiser Beltpack	SK500	Headset	Vocals	<b>2</b>
Shure	MX412	Lectern Mic	Vocals	<b>2</b>

Note: The above is included in the standard rent: The Besen Centre has various additional microphones and radio mics available for hire. Please contact the technical manager for a quote or for further information.

The theatre will add a minimum of 15% on top of all hired equipment hired in for your event.

## Audio visual

### Projector

<b>Type</b>	<b>Model</b>	<b>Detail / Accessories</b>	<b>Total</b>
Panasonic	PT-DZ13K DLP	12000 ANSI Lumen Projector	<b>1</b>
<b>Attracts an additional hire charge</b>			

### Screens

Standard projection surface is the cyclorama fixed to the rear wall of the stage being 12m wide and 7m high.

Media servers can be added to this projection system for various configurations and surfaces.

### AV Playback Equipment

Contact the Technical Manager to discuss your requirements.

## **Backstage**

### **Stage Manager's Console**

Stage manager's console located in the prompt corner and features stage vision, infrared stage vision, comms master station, audience recall button, and phone. Console has limited movement from standard position.

### **Talkback**

The Besen Centre features a talkback system routed throughout the venue and consists of 1 x Clear-Com Encore MA-702 Dual Ring Master Station in stage managers console and 7 x Jands E101 sub stations located throughout control room and fly tower.

Radio Units In-house

N/A

### **Talkback patching located at**

FOH control room; follow spots; rear stalls; centre stalls production area; OP floor level; OP mid gallery; OP upper gallery; stage manager's console; PS floor level.

### **Paging / Show relay**

Paging and show relay distributed to all dressing rooms, loading dock and company offices.

### **Stage Monitor**

TV monitors set on stage manager console, OP and P side of stage, Loading Dock, Chorus rooms and rehearsal room.

### **Dressing Rooms**

There are 3 dressing rooms available; one 7 person Principals dressing room, and two 20 person Chorus dressing rooms

All seating positions feature mirrors with lighting, and hanging space is available in each Chorus Room via 2 movable racks and in the Principals Room via a fixed rack.

All dressing rooms have shower facilities available in the Men's and Women's bathrooms. There is also show relay TVs and Audio in all rooms backstage.

### **Laundry / Wardrobe**

The Besen Centre features the following laundry facilities:

1 x Industrial size Washing Machine

1 x Industrial size Dryer

4 x costume racks in chorus dressing rooms

## **Production Facilities**

### **Production Desk**

2 adjustable production desks are available to be set up in centre over seating.

### **Production Office**

2 production offices are available for client use. Both offices have access to external phones if required.

### **Phone**

Available via the admin office. Speak to the technician on duty.

### **Fax**

Fax services are no longer available within the theatre. Speak to the theatre staff for alternative options if fax is required.

### **Access to internet**

Wireless access to the guest network is available to the production team only on request via technician on duty. This internet connection is for light use only and must not be used for show critical applications. The Besen Centre takes no responsibility for the reliability of this connection.

If you require access to the internet for show critical applications, please speak to the technical manager for more details.

### **Green Room**

The Besen Centre has a small green room BOH with an instant boiling water unit and fridge/freezer with a small kitchenette.

### **Stage Door**

Stage door is located on the west side of the building at the rear. Access path runs down the west side of the building from FOH.

## **Additional Facilities and Information**

### **Orchestral:**

Yamaha C5 tuned to A440

Yamaha upright piano tuned to A440

40 Music stands

1 Conductors stand

40 Orchestra chairs

40 Sconce lights

## **Commonly Asked Staging Questions**

### **Can we paint the stage?**

Yes, the Besen Centre does allow scenic painting of the stage with a water based paint only and only with prior approval from the Technical Manager. Cost of repainting the stage is at clients cost and can only be done by Besen Centre staff.

### **Can we fly this scenery?**

In all cases the technician on duty will inspect the object to be flown, and decide if it is safe to do so. If not, instructions on how to make it safe will be given. The technician on duty has the final say if an object can be flown.

### **Can I operate the fly system?**

Generally, yes; after reading the Risks and Hazards Assessment Document for Flying System and signing the Fly System Induction Form (Annexure B and Annexure C in the hiring contract), the technicians on duty are able to train a responsible adult (18+) to fly soft objects only; all hard objects, e.g. solid flats, will require a Besen Centre flyman.

### **Can we use masking tape on the stage?**

No not at any time. Electrical tape or glow tape are both allowed to be used on the stage.

### **Can we have food and drink on stage?**

Not at any time. The stage is a live environment and as such it must be kept as safe as possible at all times.

### **Can we run haze/smoke machines?**

Yes only with permission from the technician on duty. The technician will also need to be notified before any operation to ensure the buildings smoke detection system is isolated. If smoke/haze is used without notification to venue staff resulting in the Fire Brigade being called, any fees or charges will be the sole responsibility of the hirer.

### **Can we use hay on stage?**

In most cases no. Hay is highly flammable and has no real means of being fire rated; it also disintegrates very easily and gets caught in soft furnishings. In controlled situations the technician on duty may allow hay onstage, but only under their direction.

## **Maintenance and OHS**

The Besen Centre prides itself on running a very well maintained venue. We please ask that all people visiting the Besen Centre keep a close eye on operating systems and to report anything either unserviceable or faulty no matter how silly it might seem.

Please report any and all OHS issues direct to the technicians on duty; this includes those created by the clients' event or the venue. If no action is taken please contact the technical manager directly at any time.

JSA's will be required for some events if the technical manager believes one is required. These must be submitted to the technical manager before the event for approval. Failing to do so may result in a refusal for the intended work to take place and will be enforced.

Most events are protected by the technical staff of the Besen Centre and the OHS policies the venue has in place. Should the technician on duty require action to be taken an immediate response is required.

Should you have any concerns with the above please contact the technical manager for clarification.

Matt Silk  
Technical Manager  
The Besen Centre